

Call Board

Volume 49 Issue 8

April 2010

This Month's Program ...

**Bring out your favorite slides or digital images.
It's time for a "bring and brag" show by and for
the members.**



We've had some great shows of local and worldwide railroads over the years so bring out what you want to share and tell us about it.

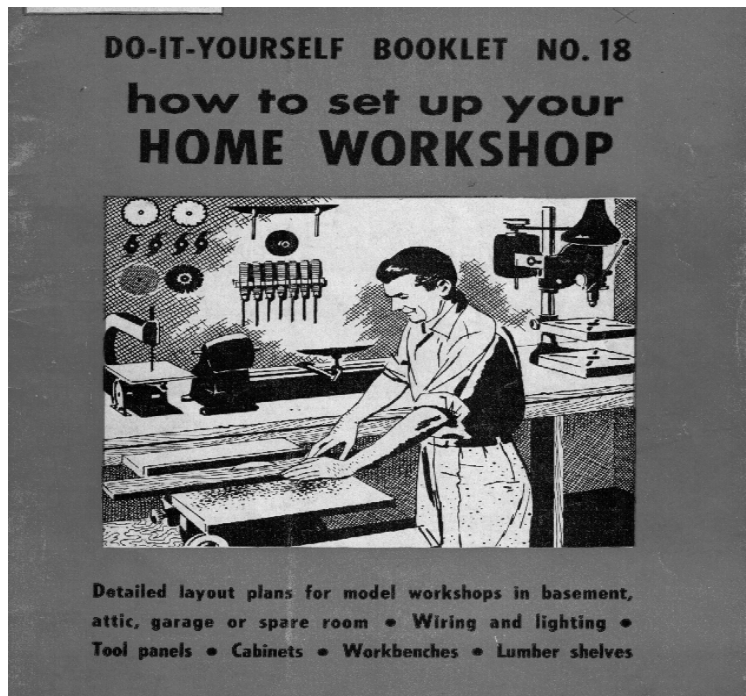
Sunday, April 18th 2PM Chapel 3

SUPER'S NOTES

Let's get rolling... Your shop is your castle...

Whether it's a full room or a kitchen table I'll bet you have an area you call your workshop. Gosh, the fun I've had over the years building railroad models in houses, apartments or even out of a portable tool box while I was in college. As I look back I recall setting overseas in the Army and wearing the covers thin looking at a little Popular Mechanics booklet on how to set up a workshop. I've learned over the years that it's not so much the space you need but the ability to adapt your work to fit. A lot depends on what you build. Railroad models take up space with tool storage but the bench space is still small. I like to have a bigger bench and keep two or three projects underway along it. Keeps me from burning out. When I get tired of one I can move to another. It can be bad for anyone who insists upon getting things finished though as I've seen some set around half finished for months while something else is "hot". For bigger projects like layout building some bigger space in a shop helps prefab the trackage and aid the actual construction. The whole question of shop space usually gets into what tools do you use and which ones are just stored? When the Harbor Freight stores came to town I became a "kid in the candy store" and couldn't walk out without a tool or two that now hang on the wall! I have learned to stay out of there every weekend so I don't find anymore "tools I can't live without".

The little book that still brings up great memories for me



Thanks for a fun train ride...

Four years ago I told you we were going on a fun trip when I was elected as Division 3 superintendent. It's been a fun four years and now the new officers take over next month. Thanks to everyone for participating and especially for telling us what you wanted like the August bus trips, the special projects and your help on the trainshows. Special thanks to Rick Lach for saving our bacon by getting our assets out of the stock market before the crash. Also to the continuous work of membership chairman Bruce Albright. Many others worked behind the scenes to bring you the great meetings with the raffles, contests and events we have had. If you had fun on the trip help me thank any of the folks I've left out. Just tell the incoming officers what you would like to see and what you want them to continue doing for special projects or presentations that would help you.

The Spring Regional Convention...

The folks down in Charleston, WV have knocked themselves out getting ready for "The Coalfield Express" on May 13-15.

Plenty of neat prototype tours and the usual big batch of informative clinics. Well worth the trip and a good break from this LONG winter. Division three folks will be doing the clerical work on running the contests so if you are going to be there we could use a little of your spare time and help. Check it all out at: www.coaldivision.org

See YOU at the next Meeting

Bob Fink MMR



Found on the Web

April 2010

During the run-up to the recent visit by Division 3 to **EnterTrainment Junction** (<http://www.entertainmentjunction.com/>) in West Chester, I was caught by the promotion that touted the “World’s Largest Indoor Train Display”. I seem to recall that some other places make similar claims, so I decided to check to numbers. The front-runners in the size debate are **Miniatur Wunderland** in Hamburg, Germany (<http://www.miniatur-wunderland.com/>) and **Northlandz** (<http://www.northlandz.com/>) in New Jersey. It didn’t take long to understand why statistics are rated above lies on the deception scale. It’s not even apples and oranges. The math gave me a headache, so if you like, you can try to decipher it yourself. But, in any case, they’re all huge and amazing displays, and really help draw attention to the hobby.

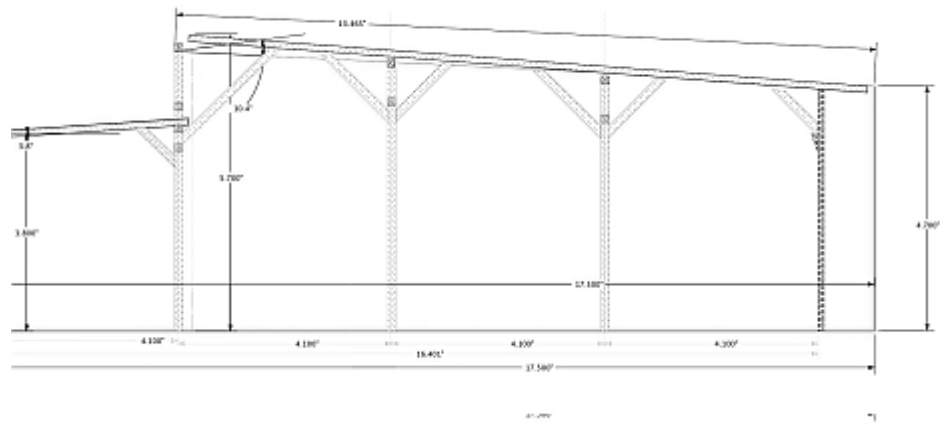
On a local note, I hope you were at the meeting when Nick Folger and John Smith showed off the in-progress model of the Parsons Yard roundhouse for John’s C&O layout. Nick’s accurate reproduction of the wooden columns and beams inside the original is terrific! In the prototype world, Jerry Joe Jacobson, of Ohio Central fame, is building a working roundhouse to help maintain and display his locomotive collection in the Sugar-creek, Ohio area. Called the “Age of Steam Roundhouse”, construction is well underway and detailed information is on the web at <http://www.ageofsteamroundhouse.com/index.html>

I was struck by the similarity between Nick’s work and the drawings of the prototype (see the drawings).

Just a short column this month, as I was on the road three weeks straight.

Happy surfing!

Norm Courtney
Division 3 Webmaster



Sharpening Your SKILLS

AP Program News...

The whole concept of the Achievement Program is based on improving your skills and getting recognition for it. To make the program work we have to offer you a chance to show your work and you have to come forward and participate. We'll do our part each month by offering a popularity contest and even a "show and tell" table to get you started. As your skills advance you can join us in the Achievement Program (AP).

Our **REGULAR** monthly contest setup ...

We have three categories each month. You can enter Scratchbuilt, KitBashed, or just plain Kit built. This allows anyone to enter anything they are proud of and at any skill level. Judging is by popular vote but if you wish to have your model judged by NMRA rules for the Achievement Program, we will make arrangements for you "on the spot".

The coming contest schedule ...

April	Passenger Cars
May	Diesel Locomotives

In March there were no entries in the freight car contest .

Bob Fink entered the only bridge in the special contest.

The National Model Railroad Association, Inc.'s 75th Anniversary Photography Contest

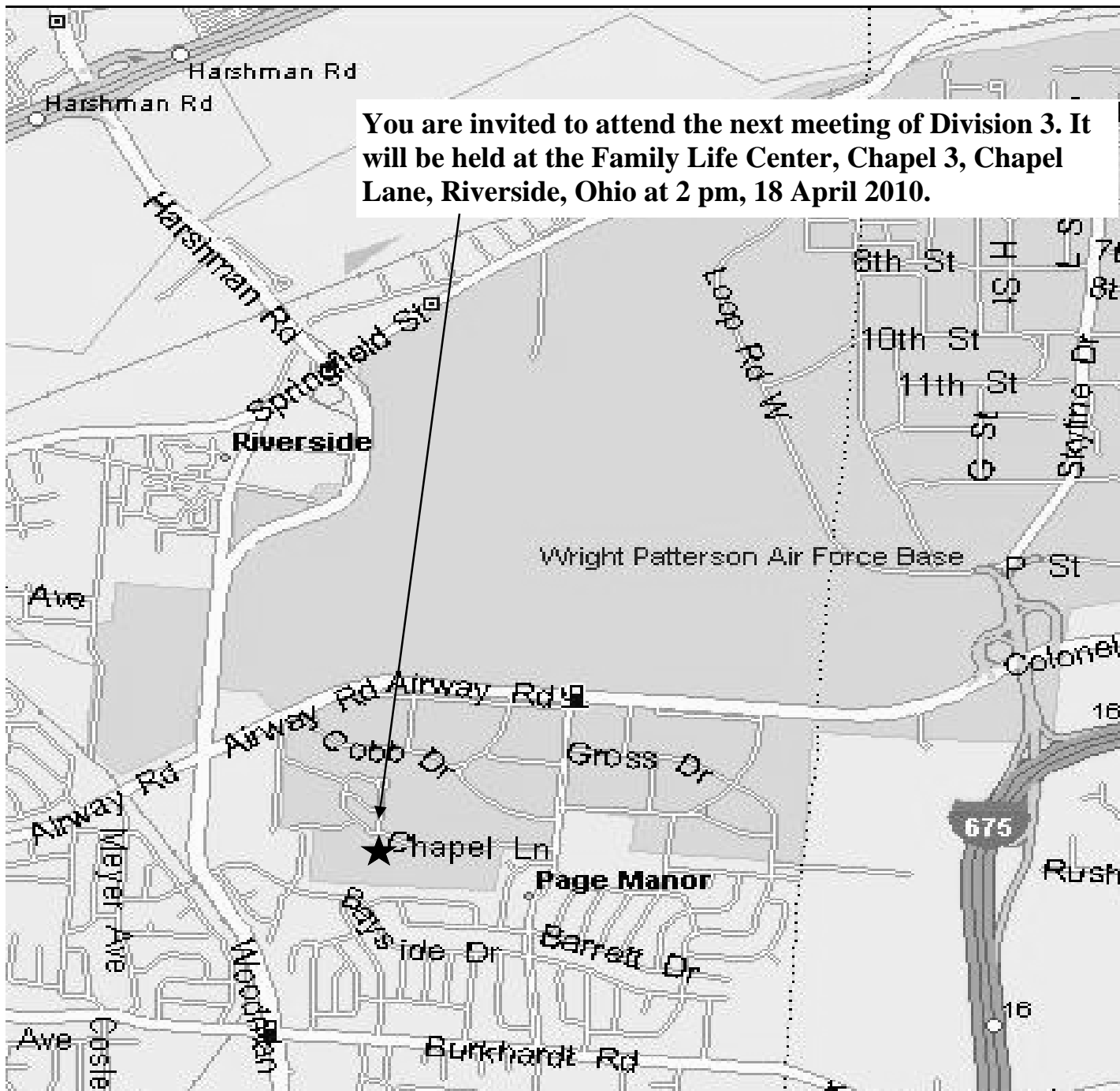
Win a cab ride in a Union Pacific steam locomotive!

The National Model Railroad Association and the Union Pacific Railroad are pleased to announce a model photography contest to help celebrate the 75th anniversary of the NMRA. The NMRA will pick one photograph submitted by an NMRA member in good standing depicting one or more models of UP equipment and/or structures in a realistic scene. The photograph will be judged for prototype fidelity of the modeling and scene as well as for photographic art.

The member submitting the photograph will win a cab ride in one of the mainline steam locomotives operated by the Union Pacific on the Kansas City to Jefferson City leg of the Missouri River Eagle Excursion. Airfare (up to \$500.00), two hotel nights, and transportation to and from the excursion will be provided for the winner by the NMRA.

To be eligible, the photograph must be in an envelope postmarked (or originated in transit by a third-party service such as FedEx or UPS) by August 31, 2010, and received no later than September 7, 2010. Only one photograph may be submitted per envelope, but there is no limit on the number of photo-

(Continued on page 5)



(Continued from page 4)

graphs a member may submit. Photographic prints, slides, or digital images are acceptable. Prints must be 8" x 10." Digital images must be taken with a camera of 7.1 megapixels or greater to satisfy the printing requirements. All submitted photographs shall become the property of the NMRA, and the NMRA and Union Pacific may use the photograph in any manner they choose. All members participating in the contest agree to provide to the NMRA the original medium of the photograph (negative, transparency, or digital file) if requested.

Please send all photographs to Robert J. Amsler, Jr., 514 Dover Place, St. Louis MO 63111. Be sure to protect photographs from bending or mishandling in the mail.

Call Board

Division 3, MCR, NMRA Inc.
11966 Lower Valley Pike
Medway, Ohio 45341-9717

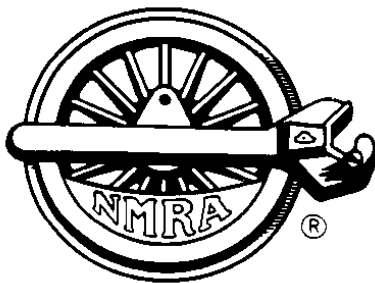
NON-PROFIT ORG.
US POSTAGE
PAID
MEDWAY, OHIO
PERMIT NO. 33

Address Service Requested



The *Call Board* is the official publication of Division 3, Mid Central Region, National Model Railroad Association. It is published monthly except in August. All comments and opinions are welcome. Those views expressed in the *Call Board* do not necessarily reflect the policies or opinions of the NMRA, the Mid Central Region or Division 3.

Call Board Editor
J. Hedge
11966 Lower Valley Pike
Medway, Ohio 45341
(937) 878-2391
hedgejn@hotmail.com



April 2010

Next Meeting	
When:	2 PM 18 April 2010
Where:	Family Life Center Chapel 3, Chapel Lane Riverside, Ohio
Program:	Members Slide Show Election of Officers
Contest:	Passenger Cars
Visitors and Guests Always Welcome	